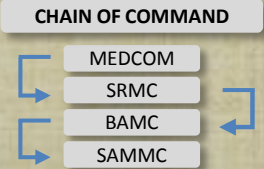
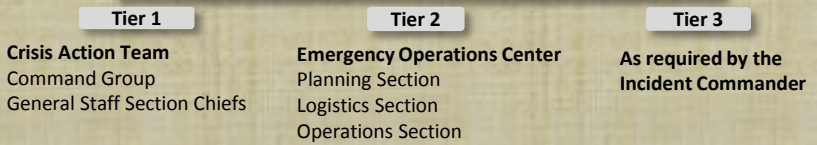


S
A
M
M
C

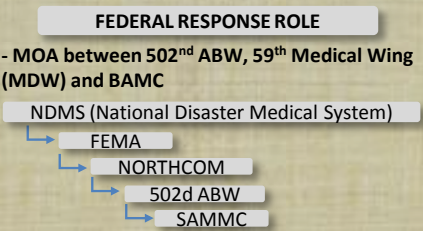
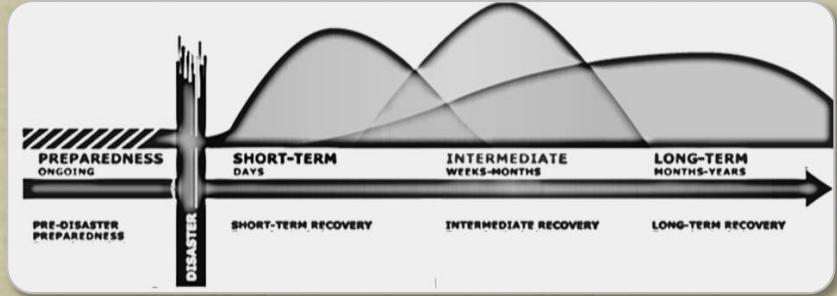
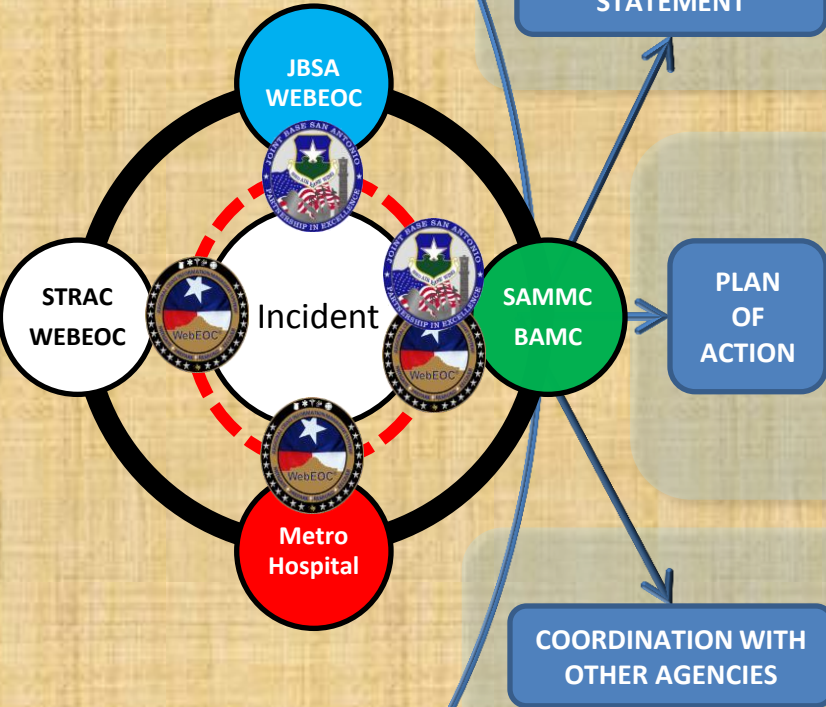
COMMAND STRUCTURE



HOSPITAL INCIDENT COMMAND SYSTEM STRUCTURE



- Promote health and provide quality compassionate, patient-centered care while developing healthcare professionals and optimizing readiness.
- Act as the Federal Coordinating Center (FCC) for participating hospitals within the San Antonio and Austin Regions (State of Texas).



- LOCAL/REGIONAL AFFILIATIONS**
- Local Agreements with Bexar and Guadalupe County municipalities
 - Local Agreement with Southwest Texas Regional Advisory Council (STRAC)

LESSONS LEARNED

- | Sheboygan, Wisconsin (2013) | Kekkaku (2011) | Pale Horse Bioterrorism Exercise (2003) |
|--|---|---|
| <ul style="list-style-type: none"> - TB outbreak among a specific ethnl group within the community - Establish incident-command early - Share information | <ul style="list-style-type: none"> - Cancer ward: do not expose immunosuppressed individuals - Prison: avoid close contact, improve ventilation - Junior High School: avoid close contact, improve ventilation | <ul style="list-style-type: none"> - Sufficient time, vaccinations, and personnel unavailable to stem the spread of disease. - Communication among the multiple emergency operations centers, the public, and providers was inadequate. |

SAMMC Action Plan

Level	Situation	Action	Requirements
PRE-OUTBREAK Phase 1a	TB circulates in population	<ul style="list-style-type: none"> ▶ Routine TB Tests and laboratory surveillance activity ▶ Prepare response plans ▶ Provide personnel training ▶ Pre-designate and train medical treatment teams and immunization teams for mass immunization campaigns 	<ul style="list-style-type: none"> ▶ Routine medical checks and surveillance ▶ Routine tests for TB Infection (Blood and Skin Tests) ▶ TB Immunizations (not common in U.S.)
PRE-OUTBREAK Phase 1b	Confirmed human to human transmission of TB that can cause pandemic	<ul style="list-style-type: none"> ▶ Increased surveillance and outbreak investigation ▶ Military commanders and MTFs review and prepare to initiate response plans ▶ Prepare to contain outbreak ▶ Alert CDC and STRAC 	<ul style="list-style-type: none"> ▶ Prepare further administrative and clinical prevention measures. ▶ Chest x-rays ▶ Specific Microbiology (rapid sputum or blood tests and antibiotic resistance) ▶ Slow cultures can take longer (1-8 weeks) ▶ Treating TB initial phase of 2 months, followed several options for 4 to 7 months (total of 6 to 9 months for treatment)
OUTBREAK ONGOING Phase 2a	Confirmation of TB outbreak by Preventive Med Staff	<ul style="list-style-type: none"> ▶ Establish isolation rooms, wings, or tents. ▶ Institute preventive measures, including facemasks and containment ▶ Enhance communication with local, state, federal, military, public health (PH) and other agencies as needed. ▶ Relocate uncontaminated patients from containment areas to alternate facilities. 	<ul style="list-style-type: none"> ▶ Find those who have been in close contact with patients and treat as in Phase 1b ▶ Prepare further administrative and clinical prevention measures ▶ Identify alternate treatment facilities ▶ Clear areas and relocate uncontaminated patients from containment areas to alternate treatment facilities
OUTBREAK ONGOING Phase 2b	Regional outbreaks abroad through State, US, MTFs utilization beyond capacity	<ul style="list-style-type: none"> ▶ Continue Phase 2a ▶ On Order, deploy additional personnel (medical treatment teams and resources) into affected areas to augment local facilities 	<ul style="list-style-type: none"> ▶ Restock supplies; re-assess. ▶ Enhance ongoing surveillance and communication routines, to include monitoring of suspected human-to-human transmissions in the FSH, Camp Bullis, and Bexar County AOR through the daily reporting by public health and/or epidemiology. ▶ Expand volunteer network
OUTBREAK ONGOING Phase 2c	Subsequent waves of outbreaks in new locations	<ul style="list-style-type: none"> ▶ Continue Phase 2a/2b actions ▶ Mandate installation targeted layered containment 	<ul style="list-style-type: none"> ▶ Mandate installation targeted layered containment
OUTBREAK ONGOING Phase 2d	Confirmation of additional TB outbreak	<ul style="list-style-type: none"> ▶ Continue Phase 2a/2b/2c actions 	<ul style="list-style-type: none"> ▶ Continue operations and begin stabilization
POST-OUTBREAK Phase 2e	Pandemic ends	<ul style="list-style-type: none"> ▶ Lessons learned/After action review 	<ul style="list-style-type: none"> ▶ Recover ▶ Lessons Learned